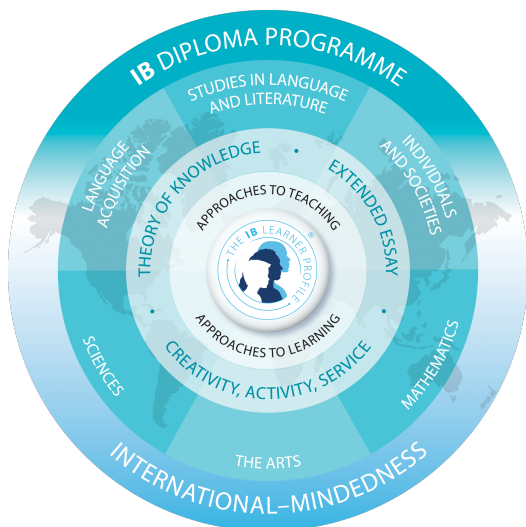


## Year 5 & Year 6: International Baccalaureate Diploma Programme (IBDP)

The International Baccalaureate aims to develop inquiring, knowledgeable and caring young people who help to create a better and more peaceful world through intercultural understanding and respect. To this end the organization works with schools, governments and international organizations to develop challenging programmes of international education and rigorous assessment. These programmes encourage students across the world to become active, compassionate and lifelong learners who understand that other people, with their differences, can also be right.

The International Baccalaureate (IB) Diploma Programme (DP) is for students aged 16-19. The DP curriculum is made up of six subject groups and the DP core, comprising Theory of Knowledge (TOK), Creativity, Activity, Service (CAS) and the Extended Essay. Through the DP core, students reflect on the nature of knowledge, complete independent research and undertake a project that often involves community service. Students must select one subject from each of the six groups, including three subjects at Standard Level (SL) and three subjects at Higher Level (HL)

### IB Diploma Programme



### IB Learner Profile



Source: <https://www.ibo.org/digital-toolkit/loqos-and-programme-models/>

Source: <https://www.ibo.org/contentassets/b53fa69a03d643b1a739d30543ca8d65/learnerprofileinachangingworldmadrid.pdf>

### Core Components

- Theory of Knowledge (ToK)
- Extended Essay (EE)
- Creativity, Activity, Service (CAS)

Group 1 Studies in Language & Literature	Group 2 Language Acquisition	Group 3 Individuals & Societies	Group 4 Sciences	Group 5 Mathematics	Group 6 The Arts Group 3 or 4 Subject
<ul style="list-style-type: none"> <li>• English Language &amp; Literature SL\HL</li> <li>• Chinese Language &amp; Literature SL\HL</li> <li>• Japanese Literature SL</li> <li>• Korean Literature SL\HL</li> <li>• Vietnamese Literature SL</li> <li>• School supported self-study (other Languages) Literature SL</li> </ul>	<ul style="list-style-type: none"> <li>• English B HL</li> <li>• Chinese B SL\HL</li> <li>• French B SL\HL</li> <li>• Spanish B SL\HL</li> <li>• Hindi B SL</li> <li>• Malay B SL</li> <li>• Tamil B SL</li> <li>• Mandarin Ab Initio SL</li> <li>• Spanish Ab Initio SL</li> <li>• Japanese Ab Initio SL</li> <li>• French Ab Initio SL</li> </ul>	<ul style="list-style-type: none"> <li>• Economics SL\HL</li> <li>• Business &amp; Management SL\HL</li> <li>• History SL\HL</li> <li>• Geography SL\HL</li> <li>• Psychology SL\HL</li> </ul>	<ul style="list-style-type: none"> <li>• Biology SL\HL</li> <li>• Chemistry SL\HL</li> <li>• Physics SL\HL</li> <li>• Sports, Exercise and Health Science SL\HL</li> </ul>	<ul style="list-style-type: none"> <li>• Analysis and Approaches SL/HL</li> <li>• Applications and Interpretation SL</li> </ul>	<ul style="list-style-type: none"> <li>• Music SL\HL</li> <li>• Visual Arts SL\HL</li> <li>• Theatre SL\HL</li> <li>• Group 3 or 4 subject</li> </ul>

### Elective Subject Notes

- The Elective table above is for illustrative purposes only. The exact subject combination changes from year to year.
- IGCSE ESOL students must get a minimum of A grade to be guaranteed a place in English Language & Literature(SL)
- Students may not opt for both Economics and Business and Management.

